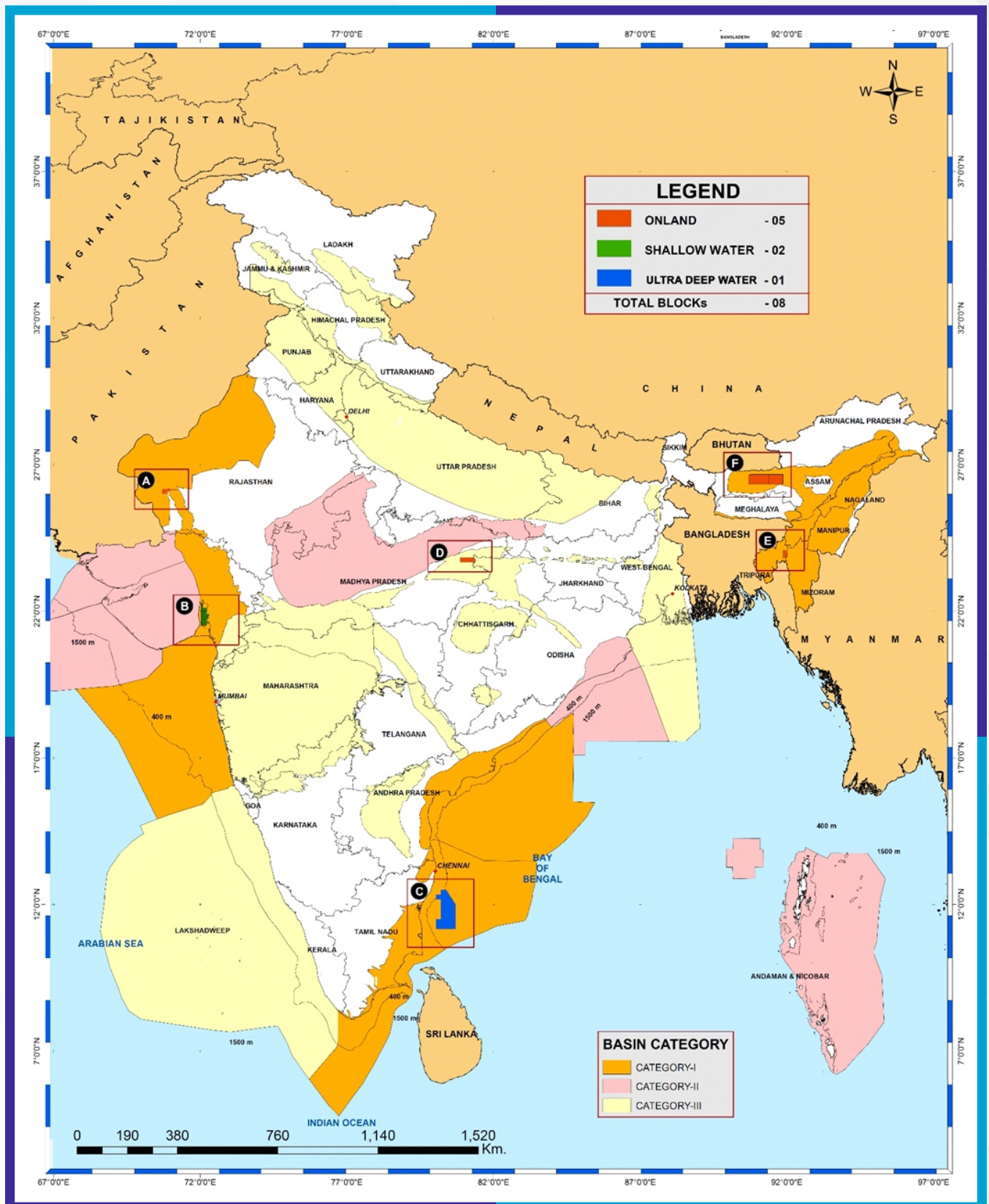
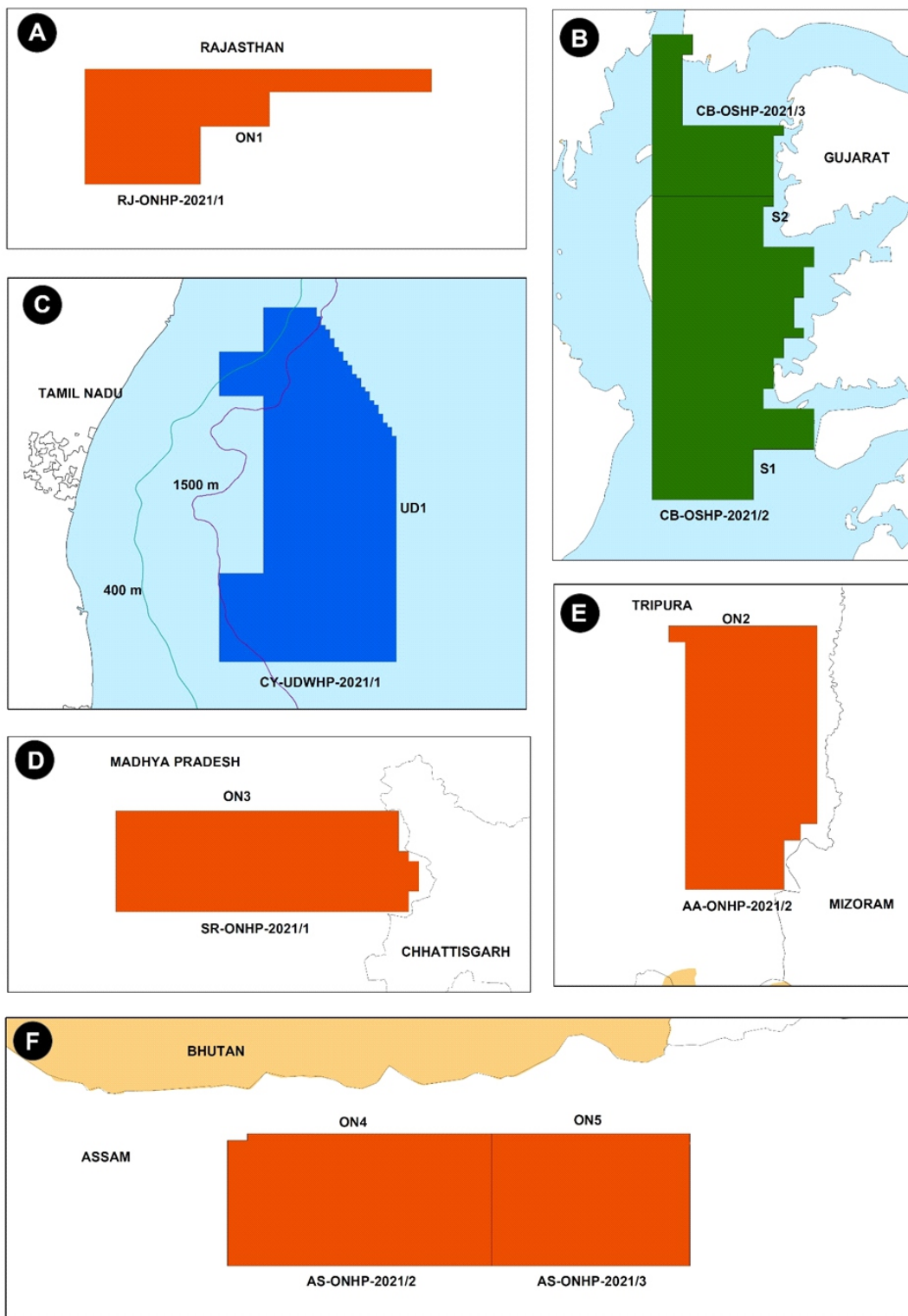


BLOCKS OFFERED UNDER OALP BID ROUND-VII



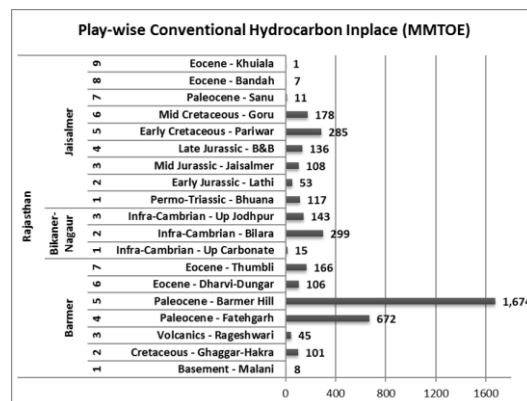
INDEX MAP OF BLOCKS ON OFFER

(EoI received under Window: X & XI)

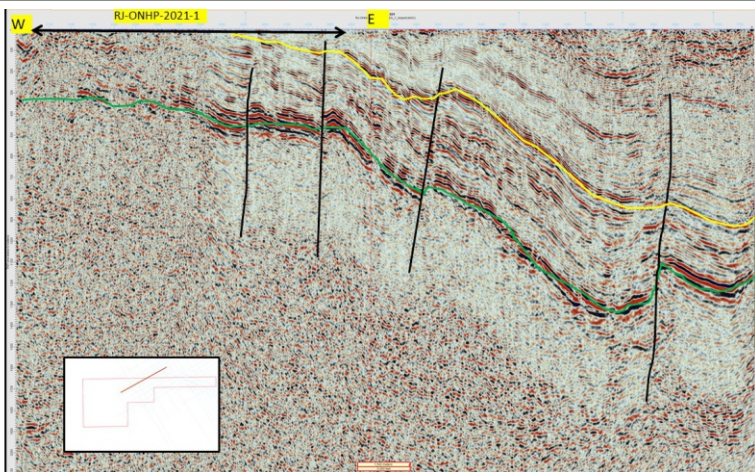


RAJASTHAN BASIN

Basin Area (sq.km)		1,26,000
EOI Window		X
Block on Offer		RJ-ONHP-2021/1
Estimated Resource potential (In-place MMTOE)	Discovered	938
	Undiscovered	3,188



Regional Structural Framework

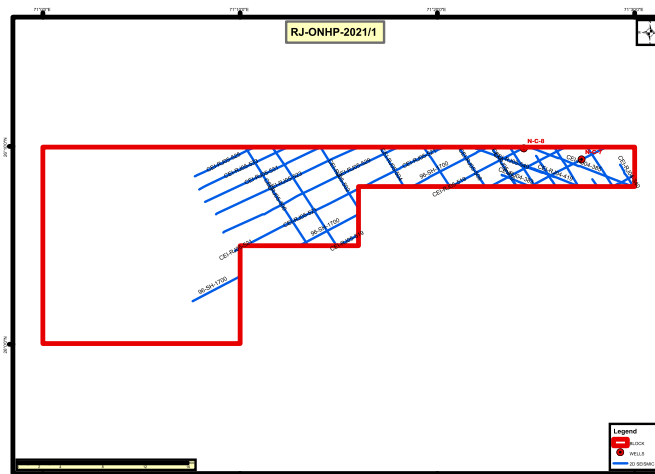


Seismic Section from RJ-ONHP-2021/1

BLOCK ON OFFER

RJ-ONHP-2021/1	
Area (sq.km)	486.39
2D Seismic LKM)	210.20
3D Seismic (sq.km)	0
No. of Wells	2
Reports	2

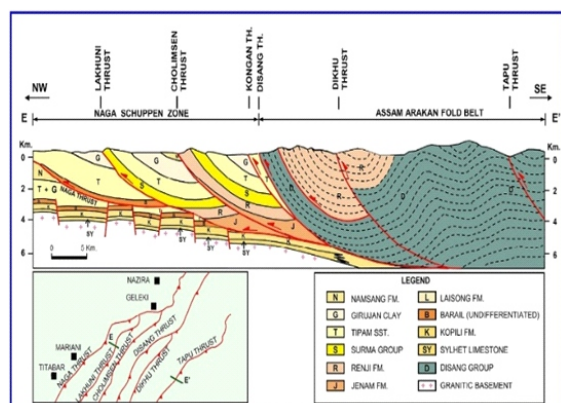
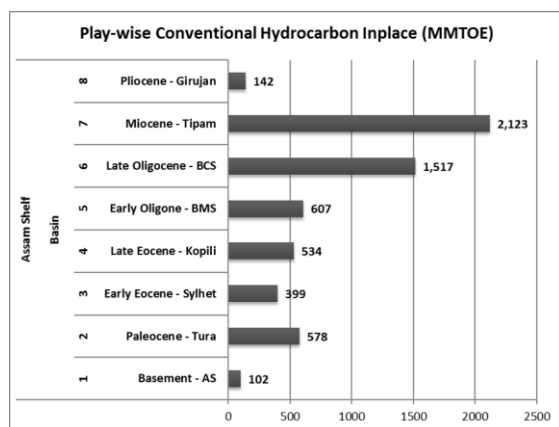
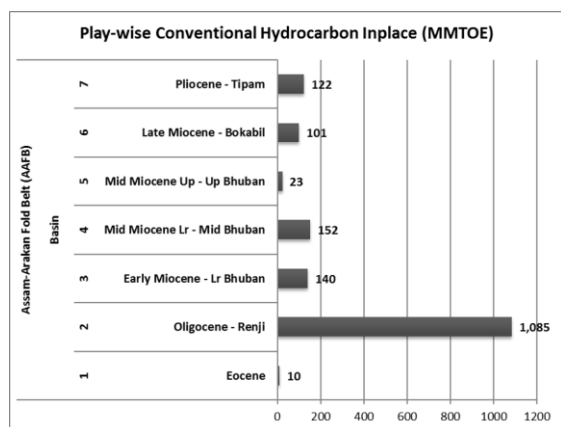
Block Information



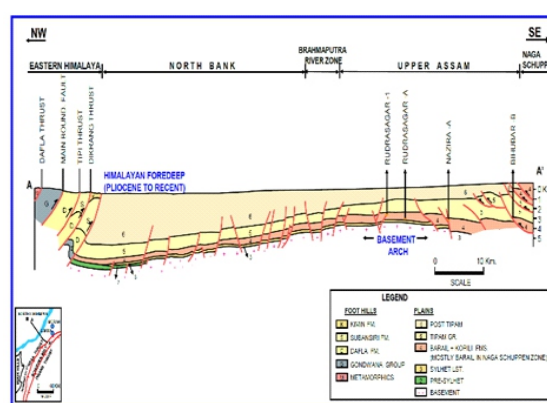
Base Map

ASSAM ARAKAN FOLD BELT BASIN & ASSAM SHELF BASIN

		ASSAM ARAKAN FOLD BELT	ASSAM SHELF
Basin Area(sq.km)		80,825	56,000
EoI Window		X	XI
Block on offer		AA-ONHP-2021/2	AS-ONHP-2021/2 AS-ONHP-2021/3
Estimated Resource potential (In-place MMTOE)	Discovered	178	1,868
	Undiscovered	1,455	4,133



Geologic Section across NSB and AARB

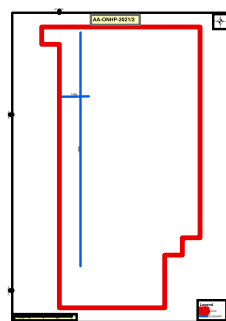
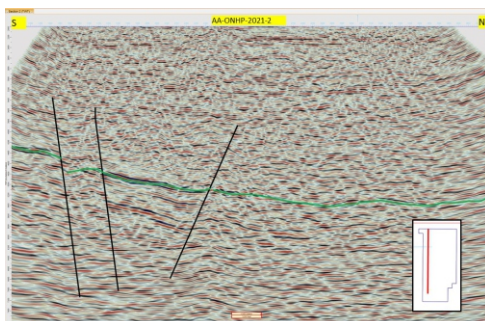


Geological Cross Section of Assam-Shelf

BLOCKS ON OFFER

AA-ONHP-2021/2

Area (sq.km)	382.05
2D Seismic (LKM)	27.38
3D Seismic (sq.km)	-
No.of Wells	-
Reports	-



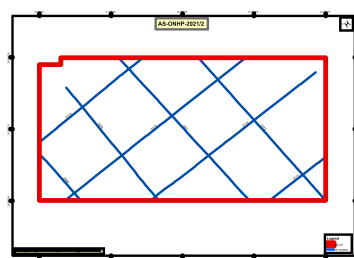
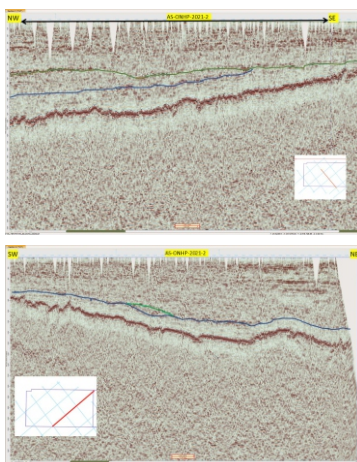
Block Information

Seismic Section : AA-ONHP-2021/2

Base Map

AS-ONHP-2021/2

Area (sq.km)	2445.03
2D Seismic (LKM)	303.22
3D Seismic (sq.km)	-
No.of Wells	-
Reports	-



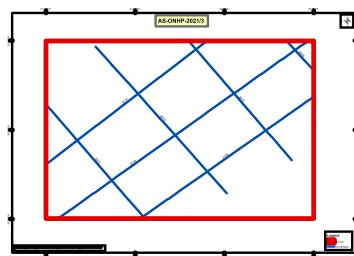
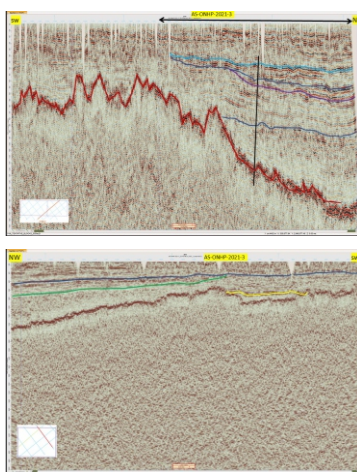
Block Information

Seismic Section : AS-ONHP-2021/2

Base Map

AS-ONHP-2021/3

Area (sq.km)	1840.87
2D Seismic (LKM)	247.91
3D Seismic (sq.km)	-
No.of Wells	-
Reports	-



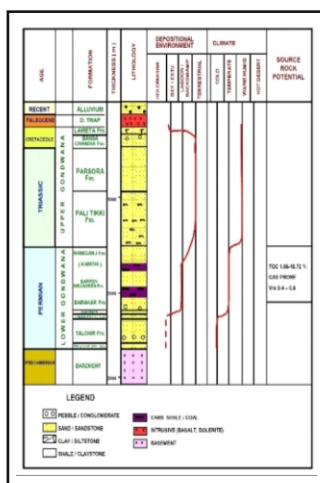
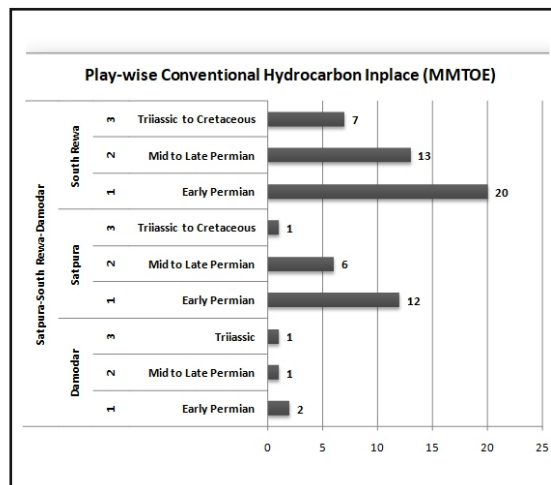
Block Information

Seismic Section : AS-ONHP-2021/3

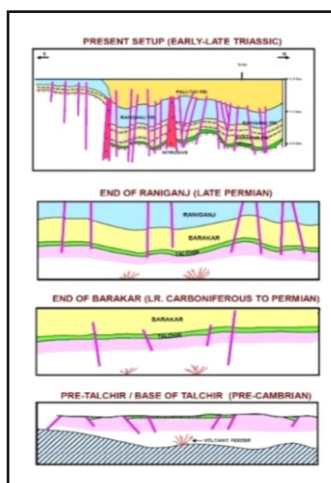
Base Map

SATPURA-SOUTH REWA-DAMODAR BASIN

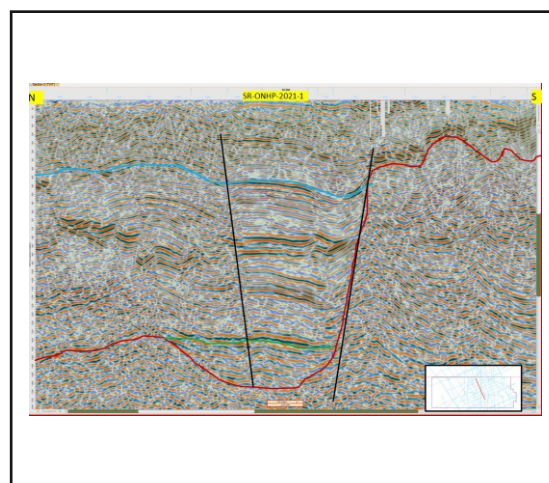
Basin Area (sq.km)	57,180	
EOI Window	X	
Block on Offer	SR-ONHP-2021/1	
Unrisked Resource potential (in-place MMTOE)	Discovered	-
	Undiscovered	63



Generalised Stratigraphy of South Rewa Basin



Evolution of South Rewa Basin

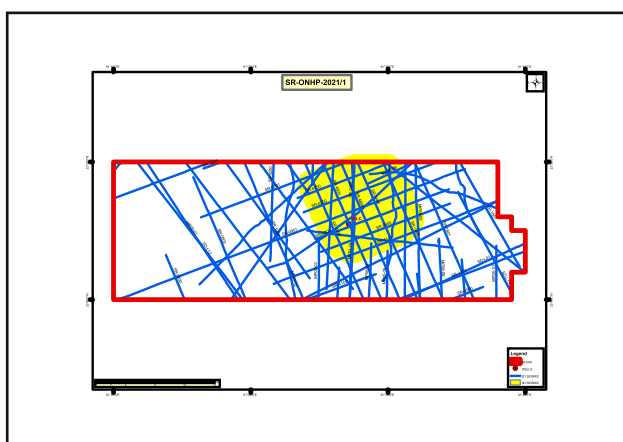


Seismic Section : SR-ONHP-2021/1

BLOCK ON OFFER

SR-ONHP-2021/1	
Area (sq.km)	906.43
2D Seismic (LKM)	900.35
3D Seismic (sq.km)	122.62
No.of Wells	1
Reports	1

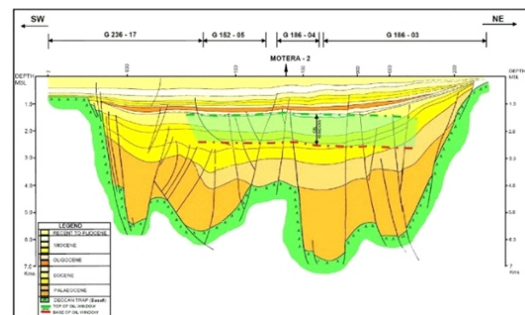
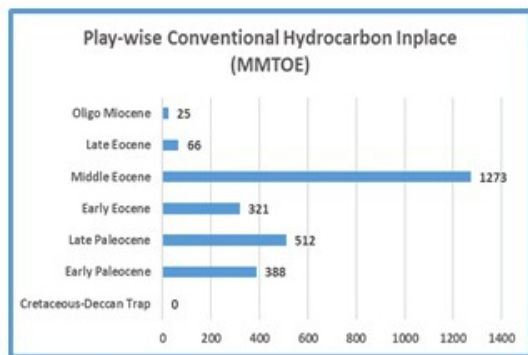
Block Information



Base Map

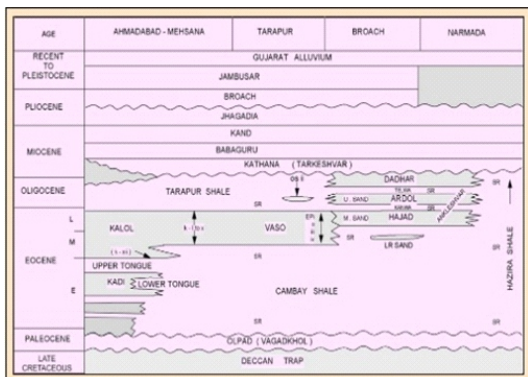
CAMBAY BASIN

Basin Area(sq.km)		53,500	
EOI Window		X	XI
Blocks on offer		CB-OSHP-2021/2	CB-OSHP-2021/3
Estimated Resource potential (In-place MMTOE)	Discovered	1,800	
	Undiscovered	786	



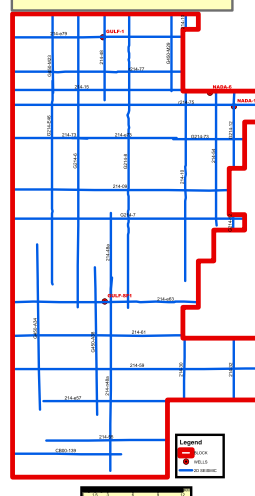
Play-wise Conventional Hydrocarbon Inplace (MMTOE)

Seismological Section Across Motera Area in Ahmedabad Block

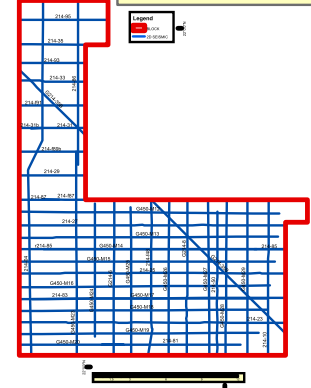


Stratigraphic Chart of Cambay Basin

CB-OSHP-2021/2



CB-OSHP-2021/3



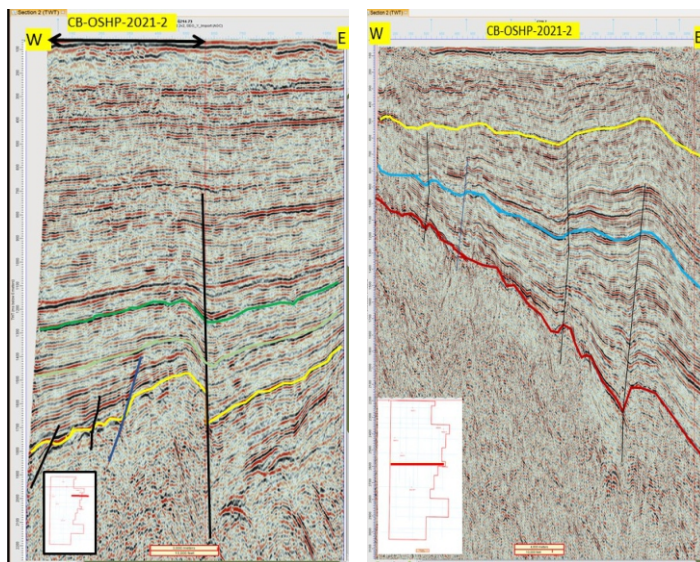
Base Map

BLOCKS ON OFFER

CB-OSHP-2021/2

Area (sq.km)	1234.42
2D Seismic (LKM)	529.61
3D Seismic (sq.km)	-
No.of Wells	4
Reports	4

Block Information

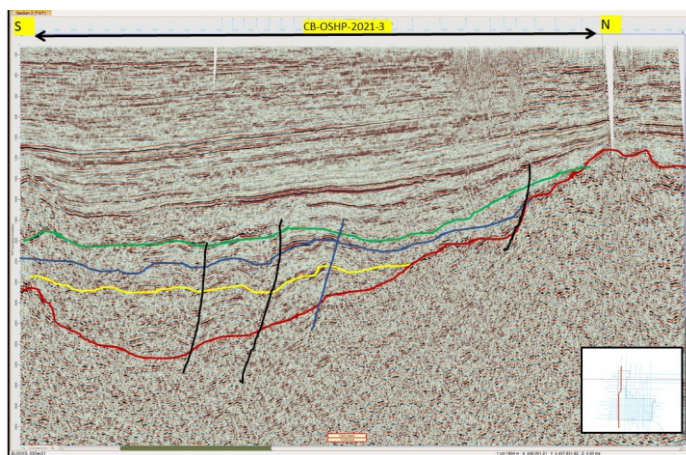


Seismic Section from Offered Block CB-OSHP-2021/2

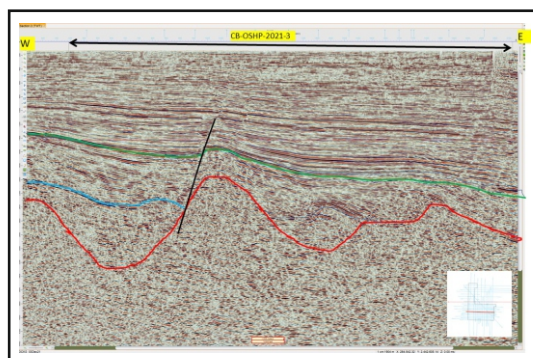
CB-OSHP-2021/3

Area (sq.km)	361.85
2D Seismic (LKM)	569.61
3D Seismic (sq.km)	-
No. of Wells	-
Reports	-

Block Information



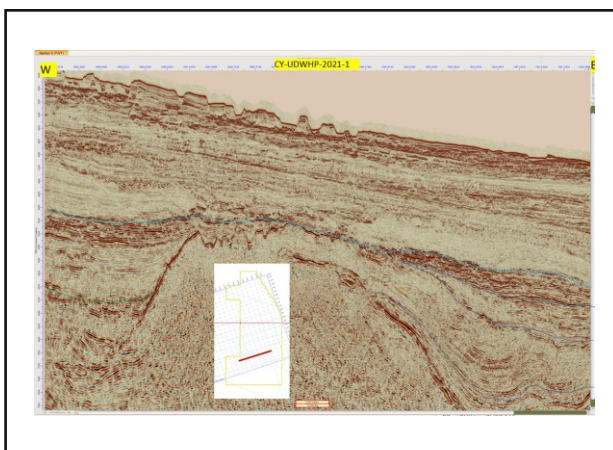
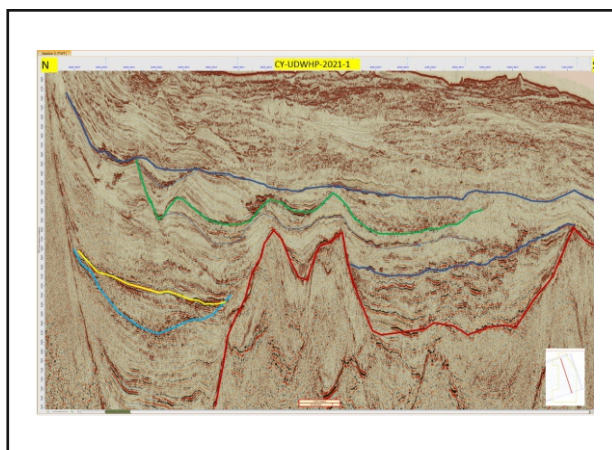
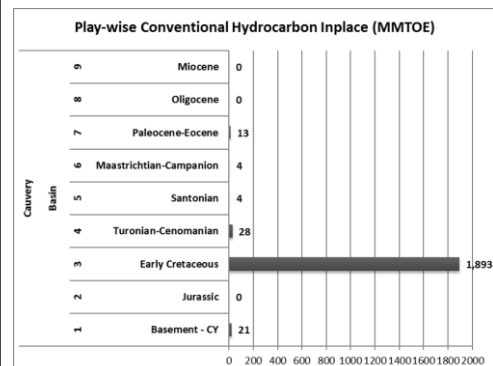
Seismic Section from Offered Block CB-OSHP-2021/3



Seismic Section from Offered Block CB-OSHP-2021/3

CAUVERY BASIN

Basin Area (sq.km)		240,000
EOI Window		X
Block on offer		CY-UDWHP-2021/1
Estimated Resource potential (In-place MMTOE)	Discovered	292
	Undiscovered	1,672

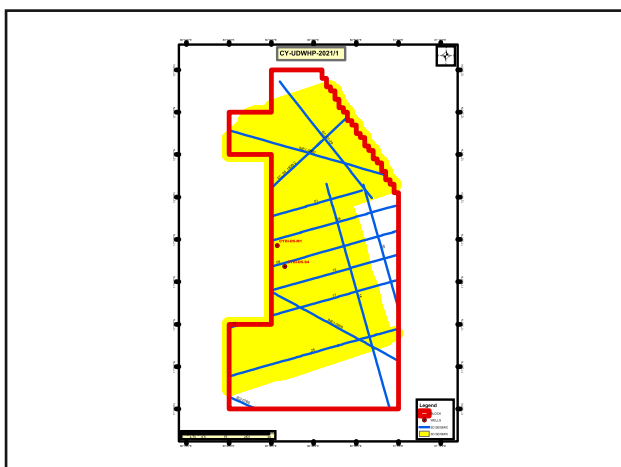


Seismic Section from Offered Block CY-UDWHP-2021/1

BLOCK ON OFFER

CY-UDWHP-2021/1	
Area (sq.km)	8,108.69
2D Seismic (LKM)	761.43
3D Seismic (sq.km)	5,346.33
No. of Wells	2
Reports	2

Block Information



Base Map

PRICE LIST OF MANDATORY DATA PACKAGES & DATA VIEWING FACILITY

MANDATORY DATA PACKAGE PRICE LIST - OALP Bid Round-VII

S. No.	BASIN NAME	BLOCK NAME	COST OF BASIC DATA (USD)
1	RAJASTHAN	RJ-ONHP-2021/1	1000
2	ASSAM ARAKAN FOLD BELT	AA-ONHP-2021/2	500
3	SATPURA-SOUTH REWA-DAMODAR	SR-ONHP-2021/1	1000
4	CAMBAY	CB-OSHP-2021/2	1000
5	CAUVERY	CY-UDWHP-2021/1	1000
6	ASSAM SHELF	AS-ONHP-2021/2	800
7	ASSAM SHELF	AS-ONHP-2021/3	750
8	CAMBAY	CB-OSHP-2021/3	600

Mandatory Data package consists of selected 2D Lines, well data and well reports (WCR/FER) from the available data in the block.

Bidders can purchase additional data over and above the basic data from NDR as per NDR purchase list. Reports of Hydrocarbon Resource Assessment can be purchased from NDR Web Portal. Originator of the Block need not to purchase Mandatory Data Package.

Data ordered and purchased between start date of respective Eol window and bid closing date with respect to the block on offer under respective OALP Bid Round for the value equal to or more than the specified value published as above will be considered against the mandatory purchase of Data Package.

DATA VIEWING FACILITY

Physical data rooms with interpretation facility

Physical data rooms with interpretation facility for Block on offer (under OALP Bid Round-VII) will be available at NOIDA, Uttar Pradesh(India). The charges for data rooms per day per workstation will be as per NDR Data Viewing Policy and fee would be payable through NDR portal (<https://www.ndrdgh.gov.in/NDR>)

The data viewing would be as per the following conditions

- A maximum of up to only 4 technical persons are permitted in Data Viewing Room at one time.
- Copying, photocopying or downloading is not allowed. Only notes can be taken.
- Bags, Briefcase etc. are not permitted in Data Viewing Room. Only pens/pencils and paper note books are permitted.
- Resource reassessment reports and data packages will be put up for viewing in the data rooms.
- Only authorized representatives of a Company/Consortium can view the data. Independent consultants are not permitted.
- Data viewing will be with prior appointment on first come first served basis.
- Company/Consortium can view selected data on online on web only on authorization by DGH, for further details, visit the DGH website: www.dghindia.gov.in

Over view of OALP Bid Rounds

OALP Bid Round-I

- Sedimentary Basins: 11
- Blocks Awarded: 55
- Total Block Area : 59,282 sq.km

OALP Bid Round-II

- Sedimentary Basins: 7
- Blocks Awarded: 14
- Total Block Area : 29,232.52 sq.km

OALP Bid Round-III

- Sedimentary Basins: 10
- Blocks Awarded: 18
- Total Block Area : 29,765 sq.km

OALP Bid Round-IV

- Sedimentary Basins: 3
- Blocks awarded: 7
- Total Block Area : 18,509.69 sq.km

OALP Bid Round -V

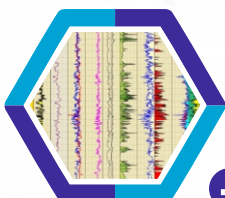
- Sedimentary Basins : 8
- Blocks Awarded :11
- Total Block Area : 19,789.04 sq.km

OALP Bid Round-VI

- Sedimentary Basins: 11
- Blocks under award: 21
- Total Block Area : 35,346.03 sq.km

OALP Bid Round-VII

- Sedimentary Basins: 6
- Blocks on offer: 8
- Total Block Area : 15,766 sq.km



DGH INDIA



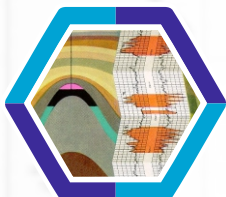
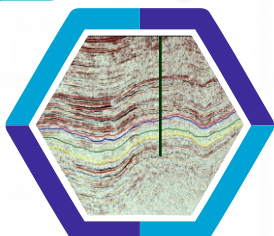
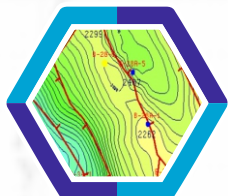
@DGH India



DGH India



DGH India



Directorate General of Hydrocarbons

(Under Ministry of Petroleum & Natural Gas)

OIDB bhawan, Tower-A, Sector - 73

Noida-201301, U.P. (INDIA)

Phone: 0120-247200

Fax: +91 120 2472049

Email: facilitationoal@dghindia.gov.in

Web: www.dghindia.gov.in