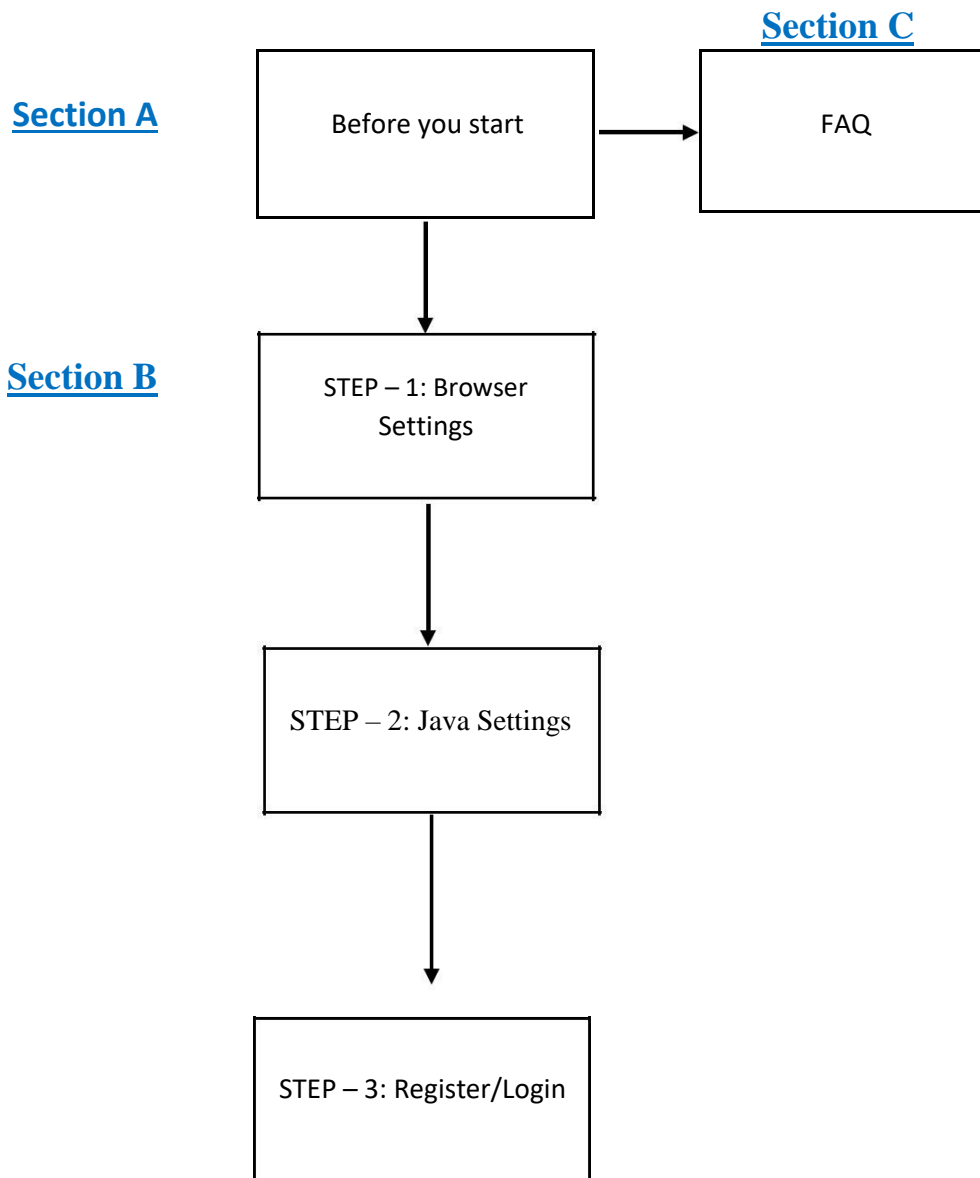








## Preferred System Setup Guidelines

### Document Organization:



## Before you start:

<p>1</p>	<p>You should use a PC/Laptop having Windows 7, Windows 8, Windows 10 or above (32 bit or 64 bit)</p> <p><i>How to check Windows Version? .....See FAQ (A)</i></p>	
<p>2</p>	<p>You should use the following browsers:</p> <ul style="list-style-type: none"> <li>▪ Internet Explorer (IE) version 9 and above (best viewed in IE 11)</li> <li>▪ Microsoft Edge</li> <li>▪ Mozilla Firefox version 47</li> <li>▪ Google Chrome version 48 and above</li> </ul> <p><b>Before attaching any document during bid submission, please follow the steps in IE:</b></p> <ul style="list-style-type: none"> <li>▪ Tools -&gt; Internet Options -&gt; Security -&gt; Custom Level -&gt; Miscellaneous</li> <li>▪ Enable 'Include Local Directory Path' when uploading files to a server'</li> </ul> <p>Please Note: (Microsoft Edge/Safari/Internet Explorer 8 or below etc. are not fully compatible with the system)</p> <p><i>How to check IE Version? .....See FAQ (B)</i></p>	
<p>3</p>	<p>You must have a 32 Bit or 64 Bit System</p> <p><i>How to check if system is 32/64 Bit? .....See FAQ (C)</i></p>	
<p>4</p>	<p>Preferred Java version to be installed: 1.8.0_77 and above 32 Bit.</p> <p><i>Don't have JAVA installed? .....See FAQ (D)</i></p>	

<p>5</p>	<p>You must have valid DSC (Digital Signature Certificate) of CLASS III- SHA 2-2048 BIT (Signing and Encryption component separately)</p> <p>The e-Token drivers must be installed properly with Root Certificates of Class 3 - SHA2 - 2048 BIT (Signing and Encryption)</p> <p><i>How to buy DSC? .....See FAQ (E)</i></p>	
<p>6</p>	<p>Regional &amp; Language Settings: Set the Regional &amp; Language format in Control Panel to ENGLISH (UNITED STATES)</p>	
<p>7</p>	<p>You must have valid credentials (User ID and Password) to access the system</p> <p><i>Not yet registered? .....See FAQ (F)</i></p> <p><i>Don't have password? .....See FAQ (G)</i></p>	

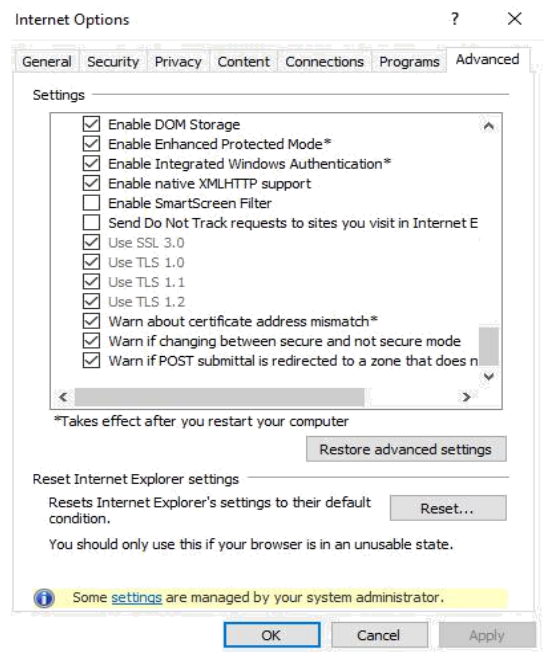
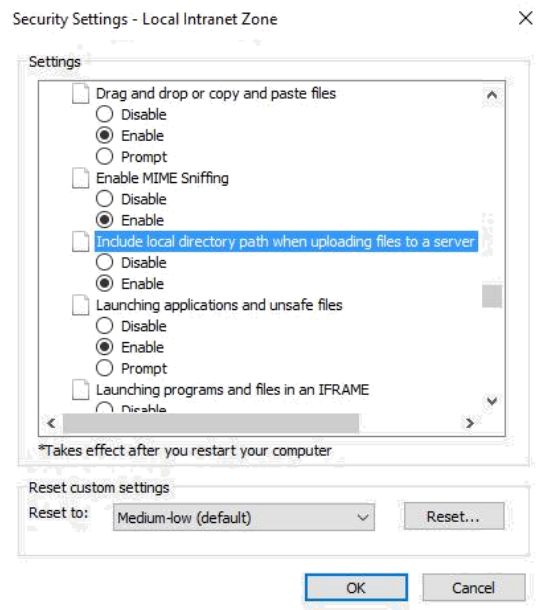
## STEP – 1: Browser Settings

Please configure the Internet Explorer as shown below:

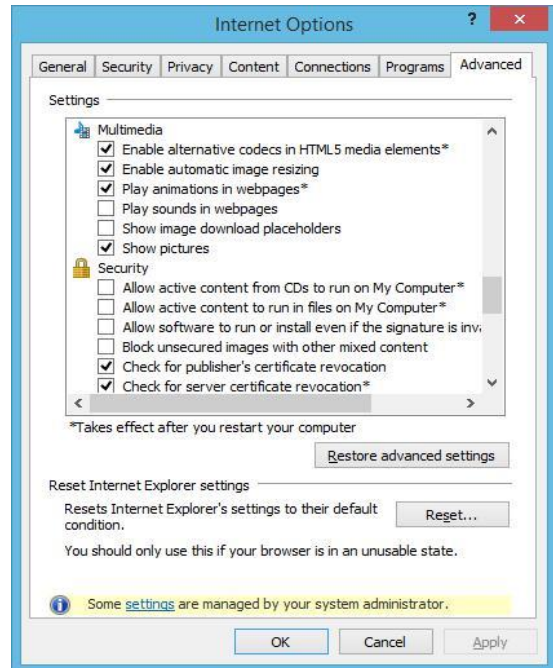
### Internet Explorer (IE): IE 9 and above

#### Open Internet Explorer and do the following Settings:

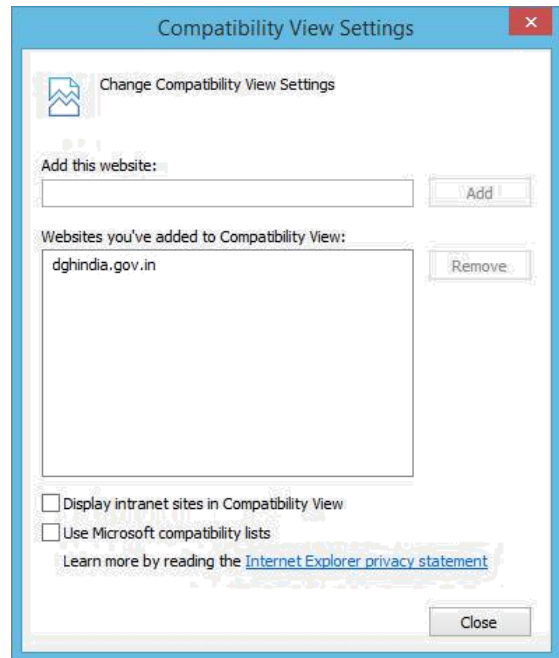
- a. Internet Explorer -> Tools -> Internet Options - > Security -> Custom Level -> Press 'I' on your keyboard twice -> Enable 'Include Local Directory path when uploading files to a server' -> OK
  
- b. Internet Explorer -> Tools -> Internet Options - > Advanced -> Drag to bottom -> Enable Use TLS 1.2, Use TLS 1.0 and Use TLS 1.1 -> Apply - > OK



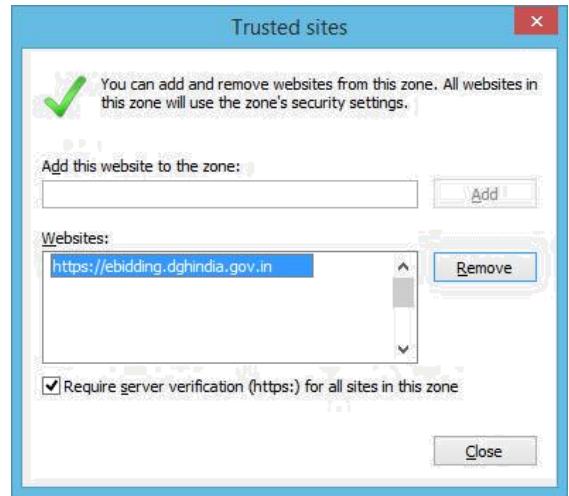
- c. Internet Explorer -> Tools -> Internet Options -> Advanced -> Drag to bottom -> Enable 'Play animations in webpages\*' under 'Multimedia' -> Apply -> OK



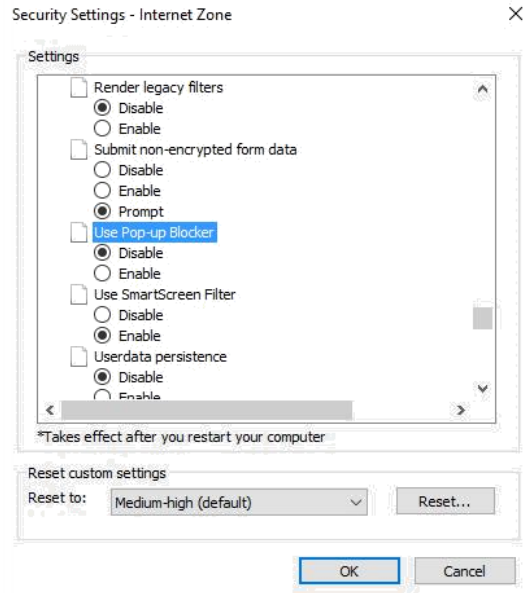
- d. Internet Explorer -> Tools -> Compatibility View Settings -> Add dghindia.gov.in -> Close



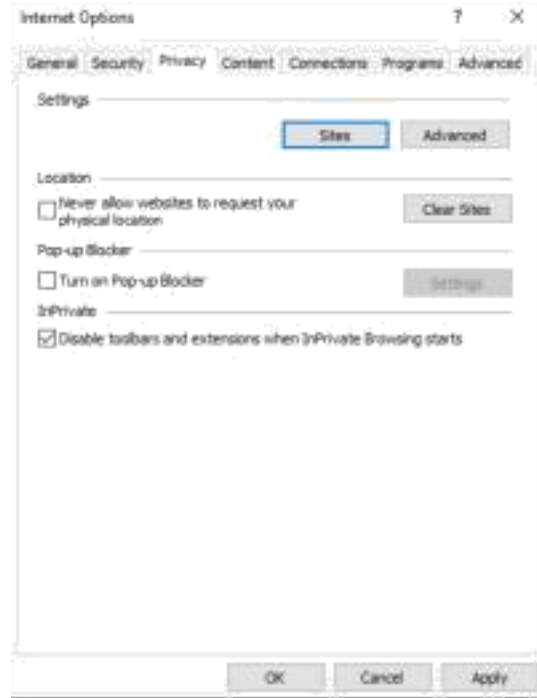
- e. Internet Explorer -> Tools -> Internet Options -> Security -> Trusted Sites -> Add <https://ebidding.dghindia.gov.in> -> Close



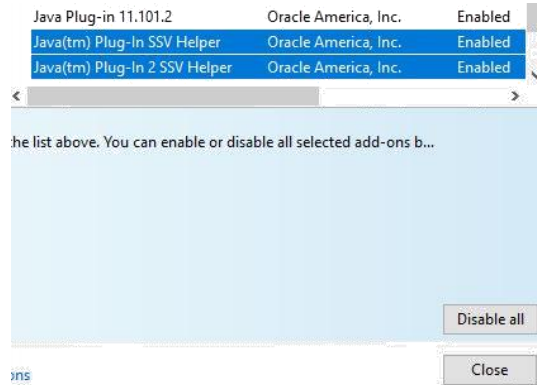
- f. Internet Explorer -> Tools -> Internet Options -> Security -> Custom Level -> Press 'U' on your keyboard -> DISABLE Pop Up Blocker -> OK



- g. Internet Explorer -> Tools -> Internet Options -> Privacy -> UNTICK Turn On Pop Blocker -> Apply -> OK



- h. Tools -> Internet Options -> Programs -> Manage add-ons -> Enable all Java Plugins



**Set the IE security levels as below:**

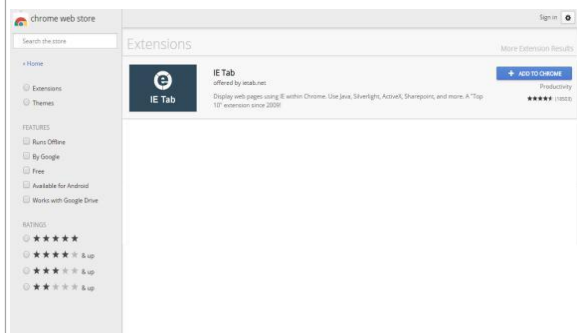
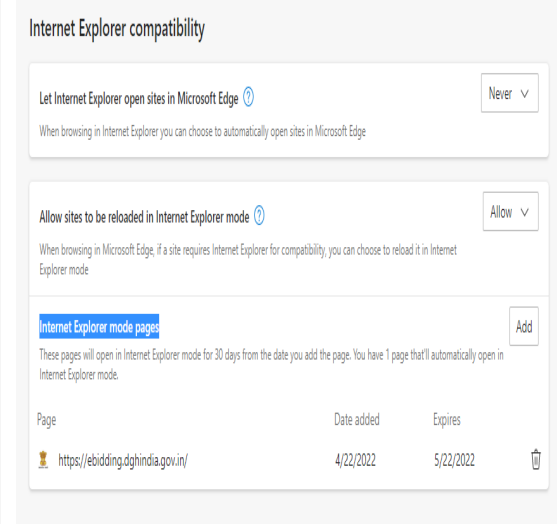
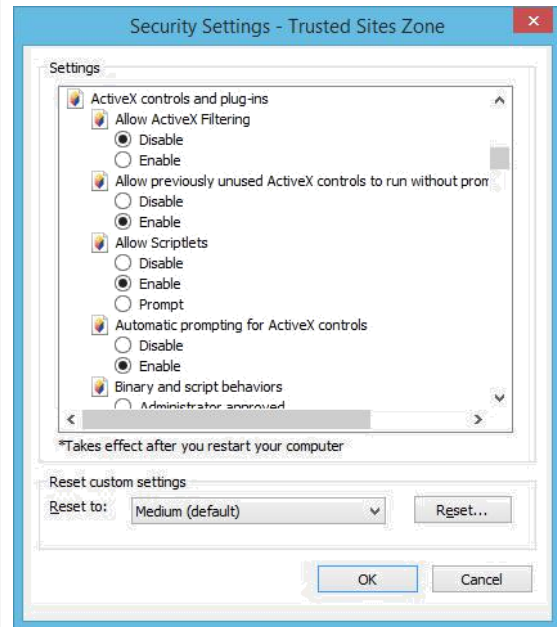
- i. Tools -> Internet Options -> Security -> Custom level:
  - Internet: Medium-high (default)
  - Trusted sites: Medium (default)
  
- j. Tools -> Internet Options -> Security -> Custom level -> Internet/Trusted sites:
  - Enable the required ActiveX controls and plug-ins, click OK

**Microsoft Edge:**

- a. Go to setting-->Default Browser (edge://settings/defaultBrowser)
  - Let Internet Explorer open sites in Microsoft Edge --> Never
  - Allow sites to be reloaded in Internet Explorer mode--> Allow
  - Internet Explorer mode pages--> Add <https://ebidding.dghindia.gov.in>

**Google Chrome:** Version 48 and above

- a. To use version 48 and above, please use 'IE Tab' extension
- b. Browser settings for Internet Explorer mentioned above (step 'a' to step 'j'), need to be completed in IE (V9 or above) prior to using 'IE Tab' extension with Google Chrome V48 and above





## STEP – 2: Java Settings

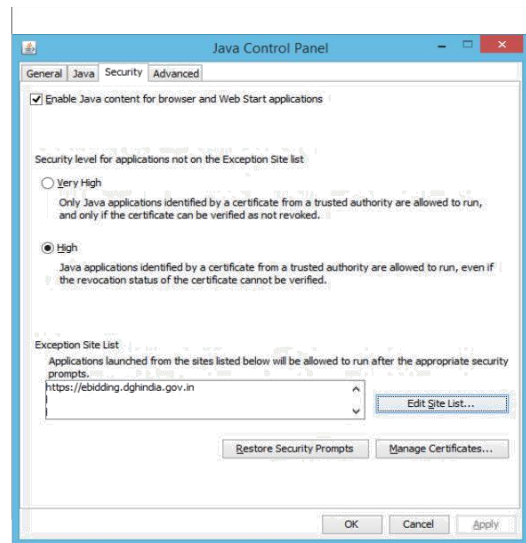
Please configure the JAVA settings as shown below:

a. Installation of Java:

- Visit <https://ebidding.dghindia.gov.in>
- You can download and install JAVA from **Downloads** section

b. Configuration of Java


- Control Panel -> Java -> Security -> Set the Java security level to Medium or High
- Control panel -> Java -> Security -> Edit Site List -> Add -> enter <https://ebidding.dghindia.gov.in> -> Apply -> OK



## STEP – 3: Login

<p>Please ensure that Step 1 and Step 2 are successfully completed</p>	
<p>Insert the e-Token (installed) in the USB drive of your system</p>	
<p>Login with the ID and Password already provided</p>	
<p><b>Signing Certificate Mapping:</b> For first time users or if you Login with your new certificate for the first time, you may receive a message during login process as follows:</p> <p><b>“Your Certificate is Pending for Approval”:</b> Please contact DGH Admin for the approval of your Signing certificate</p>	
<p><b>Encryption Certificate Mapping:</b> For first time users or users who have purchased new Encryption Certificate have to map their Encryption certificate:</p> <p>After successful Login using Signing certificate, click Register DSC -&gt; Select “For Encryption” -&gt; click Select Digital Certificate -&gt; select your Certificate and click OK -&gt; click Close to close the certificate information box -&gt; check for the message <b>“Your Digital Certificate xxxxxxxxx has been added successfully”</b> which indicates that you have successfully mapped your Encryption Certificate</p> <p>Also, ensure that both the Signing and Encryption certificates are showing as ACTIVE after the mapping has been done.</p>	

## FAQ

<p><b>A</b></p>	<p><b>How to check Windows version?</b></p> <ul style="list-style-type: none"> <li>➤ Right Click on My Computer/This PC -&gt; Properties -&gt; Check the Windows Edition</li> </ul>	<p>View basic information about your computer</p> <p>Windows edition _____          Windows 10 Pro          © 2016 Microsoft Corporation. All rights reserved.</p> <p>System _____</p> <p>Processor: Intel(R) Core(TM) i3-5005U CPU @ 2.30GHz          Installed memory (RAM): 8.00 GB          System type: 64-bit Operating System, x64-based processor          Pen and Touch: No Pen or Touch Input is available for this device</p>
<p><b>B</b></p>	<p><b>How to check IE Version?</b></p> <ul style="list-style-type: none"> <li>➤ Open Internet Explorer -&gt; Go to Help -&gt; Click About Internet Explorer</li> </ul>	
<p><b>C</b></p>	<p><b>How to check if system is 32/64 Bit?</b></p> <ul style="list-style-type: none"> <li>➤ Right Click on My Computer/This PC -&gt; Properties -&gt; Check the System Type</li> </ul>	<p>© 2016 Microsoft Corporation. All rights reserved.</p> <p>System _____</p> <p>Processor: Intel(R) Core(TM) i3-5005          Installed memory (RAM): 8.00 GB          System type: 64-bit Operating System,          Pen and Touch: No Pen or Touch Input is</p>

<b>D</b>	<p><b>Don't have JAVA Installed?</b></p> <ul style="list-style-type: none"> <li>Visit <a href="https://ebidding.dghindia.gov.in">https://ebidding.dghindia.gov.in</a></li> <li>You can download and install Java from <b>Downloads</b> section</li> </ul> <p>Please Note:</p> <ul style="list-style-type: none"> <li>If your system is of 32 Bit please install only 32 Bit Java</li> <li>If your system is of 64 Bit, please install 32 &amp; 64 Bit Java both.</li> </ul>													
<b>E</b>	<p><b>How to buy DSC?</b></p> <ul style="list-style-type: none"> <li>You may buy Class III DSCs from the following:</li> </ul> <table border="1" data-bbox="267 823 876 1066"> <thead> <tr> <th>CA</th> <th>Portal</th> </tr> </thead> <tbody> <tr> <td>Safescrypt</td> <td><a href="http://www.safescrypt.com">www.safescrypt.com</a></td> </tr> <tr> <td>(n)Code</td> <td><a href="http://www.ncodesolutions.com">www.ncodesolutions.com</a></td> </tr> <tr> <td>e-Mudhra</td> <td><a href="http://www.e-Mudhra.com">www.e-Mudhra.com</a></td> </tr> <tr> <td>Capricorn</td> <td><a href="https://www.certificate.digital">https://www.certificate.digital</a></td> </tr> <tr> <td>Verasys</td> <td><a href="https://www.vsign.in">https://www.vsign.in</a></td> </tr> </tbody> </table>	CA	Portal	Safescrypt	<a href="http://www.safescrypt.com">www.safescrypt.com</a>	(n)Code	<a href="http://www.ncodesolutions.com">www.ncodesolutions.com</a>	e-Mudhra	<a href="http://www.e-Mudhra.com">www.e-Mudhra.com</a>	Capricorn	<a href="https://www.certificate.digital">https://www.certificate.digital</a>	Verasys	<a href="https://www.vsign.in">https://www.vsign.in</a>	
CA	Portal													
Safescrypt	<a href="http://www.safescrypt.com">www.safescrypt.com</a>													
(n)Code	<a href="http://www.ncodesolutions.com">www.ncodesolutions.com</a>													
e-Mudhra	<a href="http://www.e-Mudhra.com">www.e-Mudhra.com</a>													
Capricorn	<a href="https://www.certificate.digital">https://www.certificate.digital</a>													
Verasys	<a href="https://www.vsign.in">https://www.vsign.in</a>													
<b>F</b>	<p><b>Not yet registered?</b></p> <ul style="list-style-type: none"> <li>Please visit <a href="https://ebidding.dghindia.gov.in">https://ebidding.dghindia.gov.in</a></li> <li>Download the <b>Bidder Registration</b> manual from the <b>Manuals</b> section</li> <li>Follow the guidelines and complete the registration process</li> </ul>													
<b>G</b>	<p><b>Don't have the Password?</b></p> <p>Please visit <a href="https://ebidding.dghindia.gov.in">https://ebidding.dghindia.gov.in</a></p> <ul style="list-style-type: none"> <li>Use any of the following options to generate new password: <ul style="list-style-type: none"> <li>Password Recovery Using Email</li> <li>Password Recovery Using DSC</li> </ul> </li> </ul>	<div style="border: 1px solid #ccc; padding: 10px; background-color: #f9f9f9;"> <div style="margin-bottom: 5px;"><input type="text" value="User ID"/></div> <div style="margin-bottom: 5px;"><input type="password" value="Password"/></div> <div style="text-align: center;"> <a href="#">LOGIN</a>   <a href="#">REGISTER</a>  <a href="#">PASSWORD RECOVERY USING EMAIL</a>  <a href="#">PASSWORD RECOVERY USING DSC</a> </div> </div>												

**If you still have problems in accessing the system through “<https://ebidding.dghindia.gov.in>” after following the above Guidelines, please contact the Helpdesk numbers: +91-33-66011707, +91-33-44091707.**